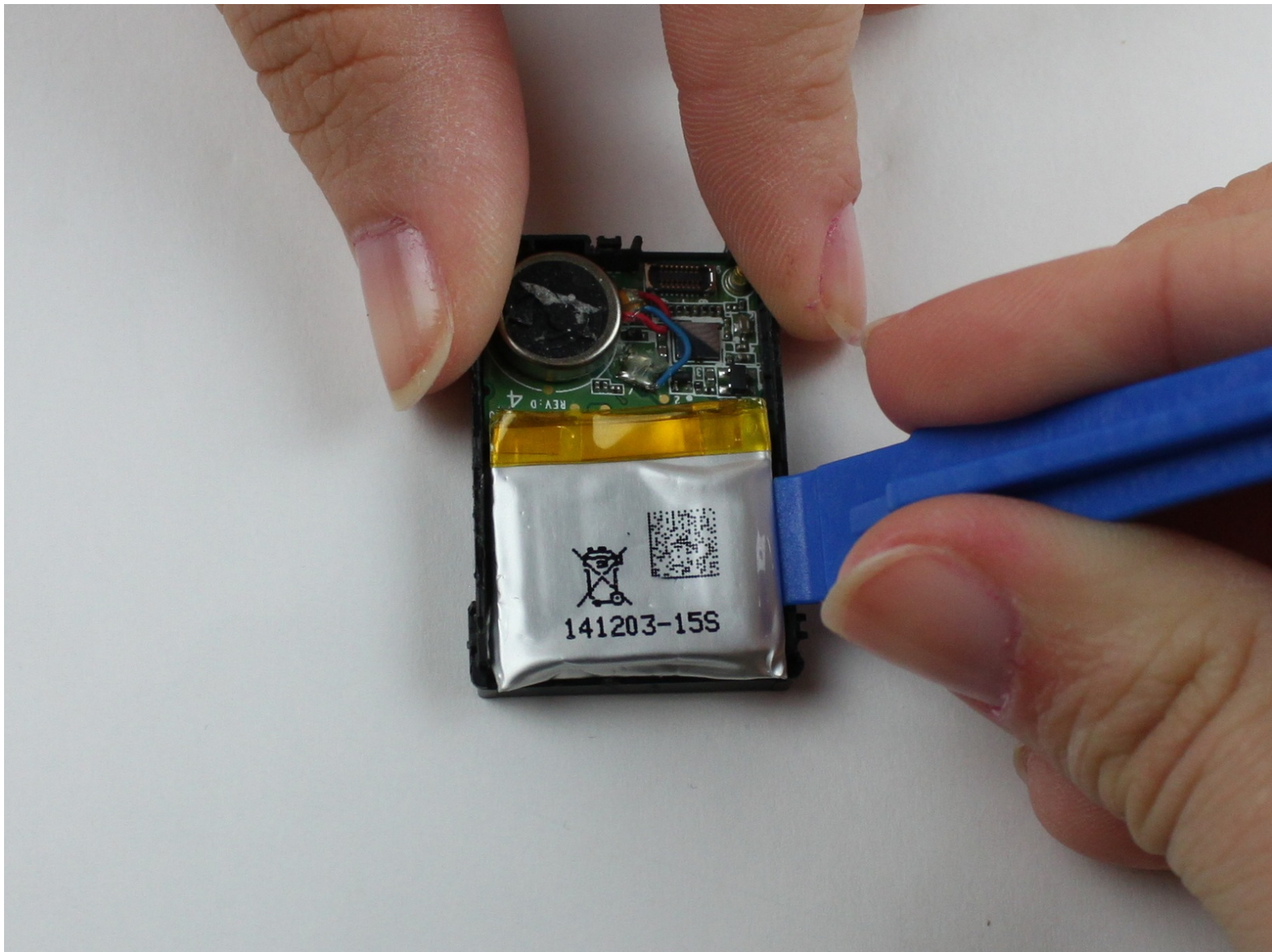




Pebble Steel Battery Replacement

This guide will show you how to replace the battery in a Pebble Steel.

Written By: MTS



INTRODUCTION

Is your Pebble Steel not turning on and you've tried all other troubleshooting options? The battery may need to be replaced. If so, this guide can help!

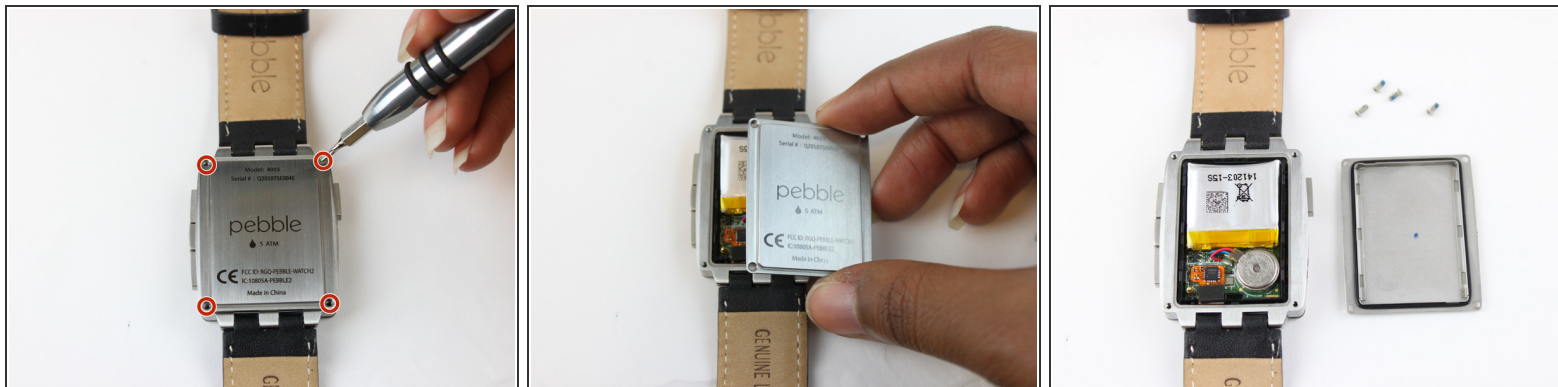
Replacing the battery in this device requires soldering. To learn more about soldering, check out iFixit's [soldering technique guide!](#)



TOOLS:

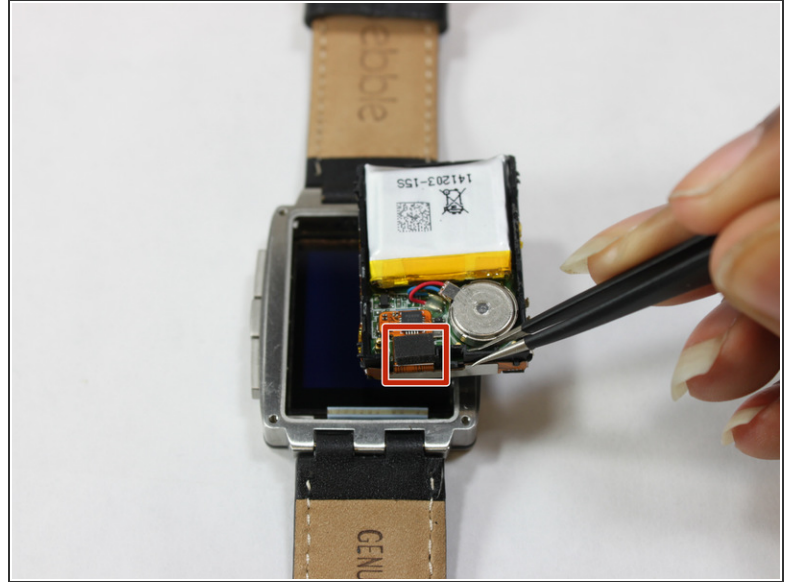
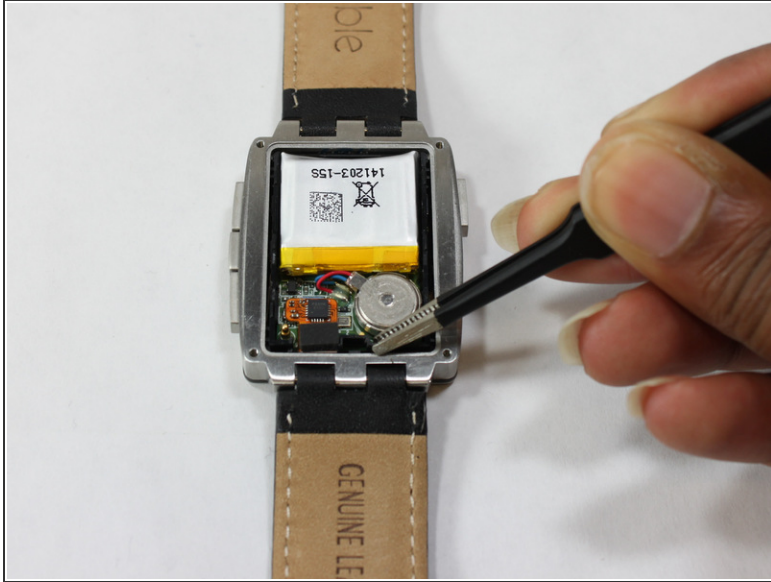
- [iFixit Opening Tools](#) (1)
 - [T3 Torx Screwdriver](#) (1)
 - [Tweezers](#) (1)
 - [Soldering Station](#) (1)
-

Step 1 — Internal Hardware



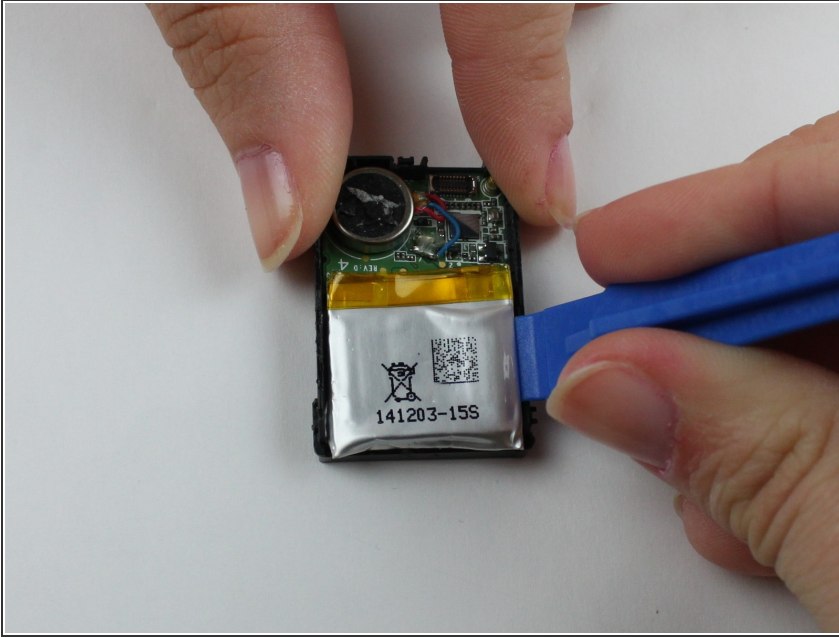
- Use a Torx T3 screwdriver to unscrew the four 3.5 mm Torx T3 screws holding the back plate.
- ☑ Make sure the screws are kept in a safe place to insure they are not lost.
- Remove the back plate.

Step 2



- The plastic frame is clipped inside the steel body with four clips, two each on the left and the right side of the watch, near the corners. You can stick a small screwdriver into the cutouts right above the clips and gently lever the plastic frame up, corner by corner.
- Once the clips are released, use a pair of tweezers to grab onto the black plastic frame and remove the internal hardware.
- ⓘ Adhesive on the back side of the battery holds the internal components to the front case.
- Use tweezers or a plastic opening tool to disconnect the ribbon cable from the motherboard.

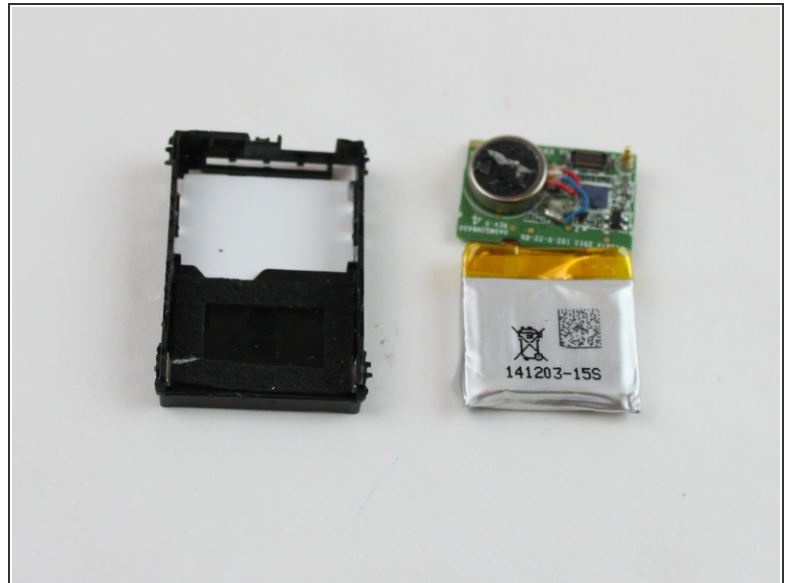
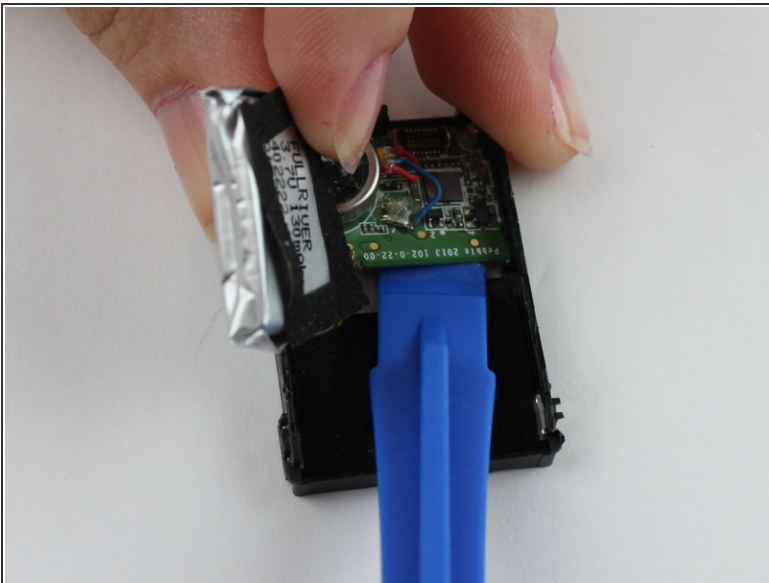
Step 3 — Battery



- Flip the internal components over, and use a plastic opening tool to pry the battery out of the black plastic frame.

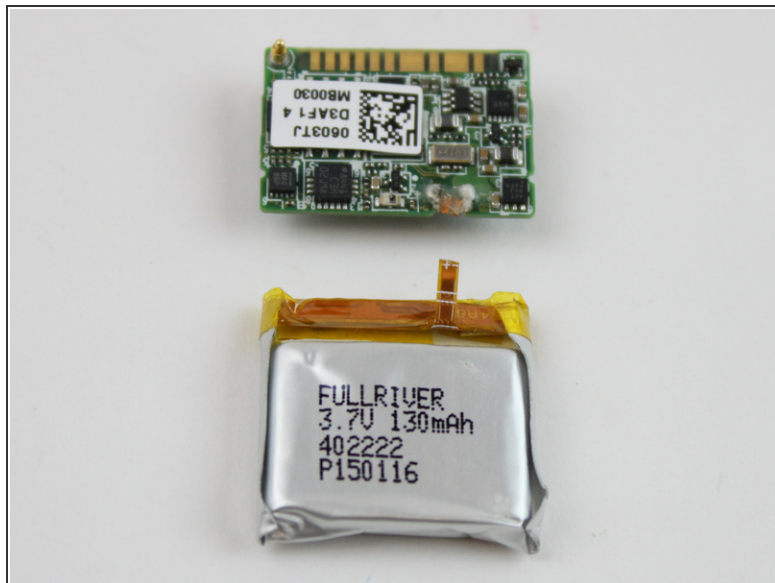
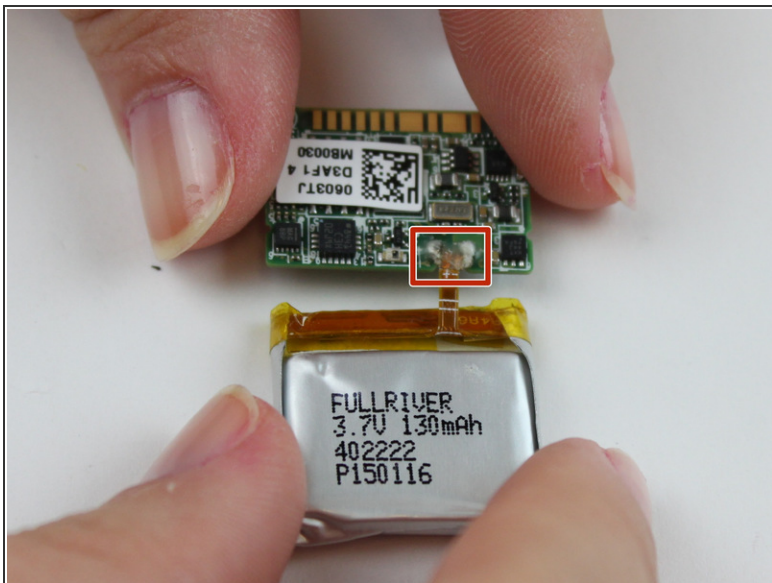
⚠ The battery has a ribbon cable that is soldered to the motherboard. Be sure not to tear the cable when removing the battery from the case.

Step 4



- Use a plastic opening tool to remove the motherboard from the black plastic frame.
- The frame has integrated clips above the 4 corners of the motherboard. You can flex the frame gently to release these clips while lifting gently from below.

Step 5



- Turn the battery and motherboard to the opposite side to expose where they are connected.
- Desolder the two battery connections to remove it from the motherboard.

To reassemble your device, follow these instructions in reverse order.

This document was last generated on 2017-10-10 11:47:12 AM.